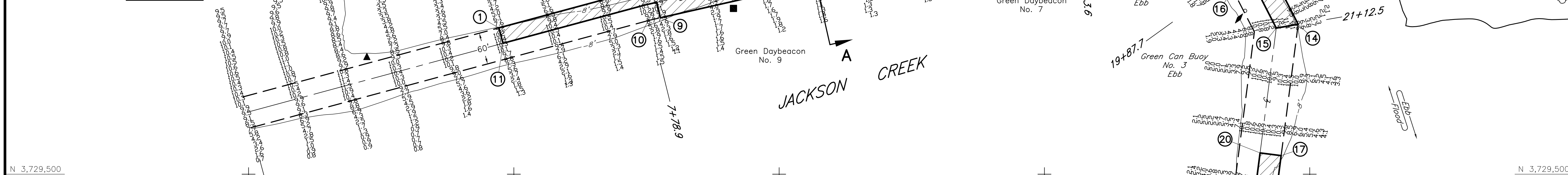


VICINITY MAP

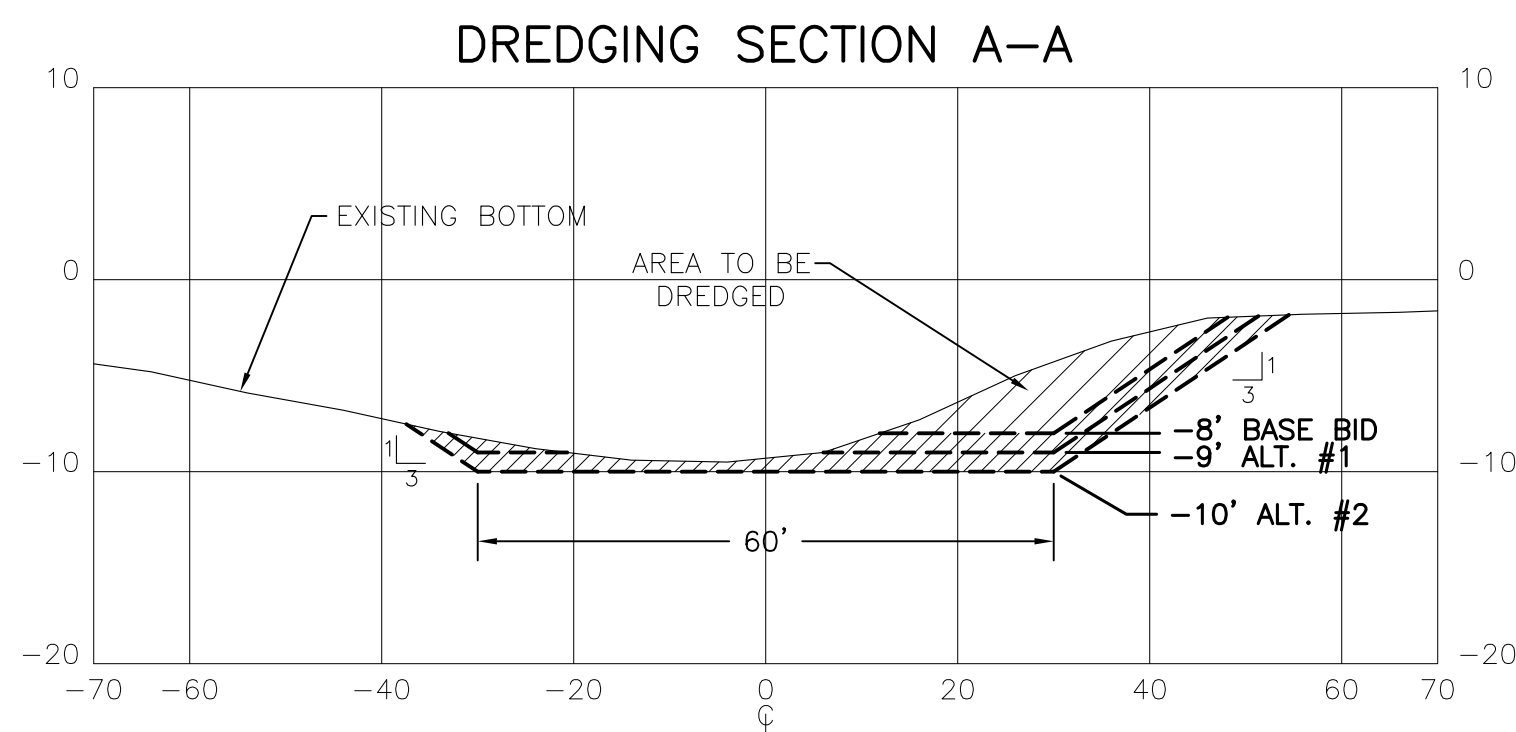
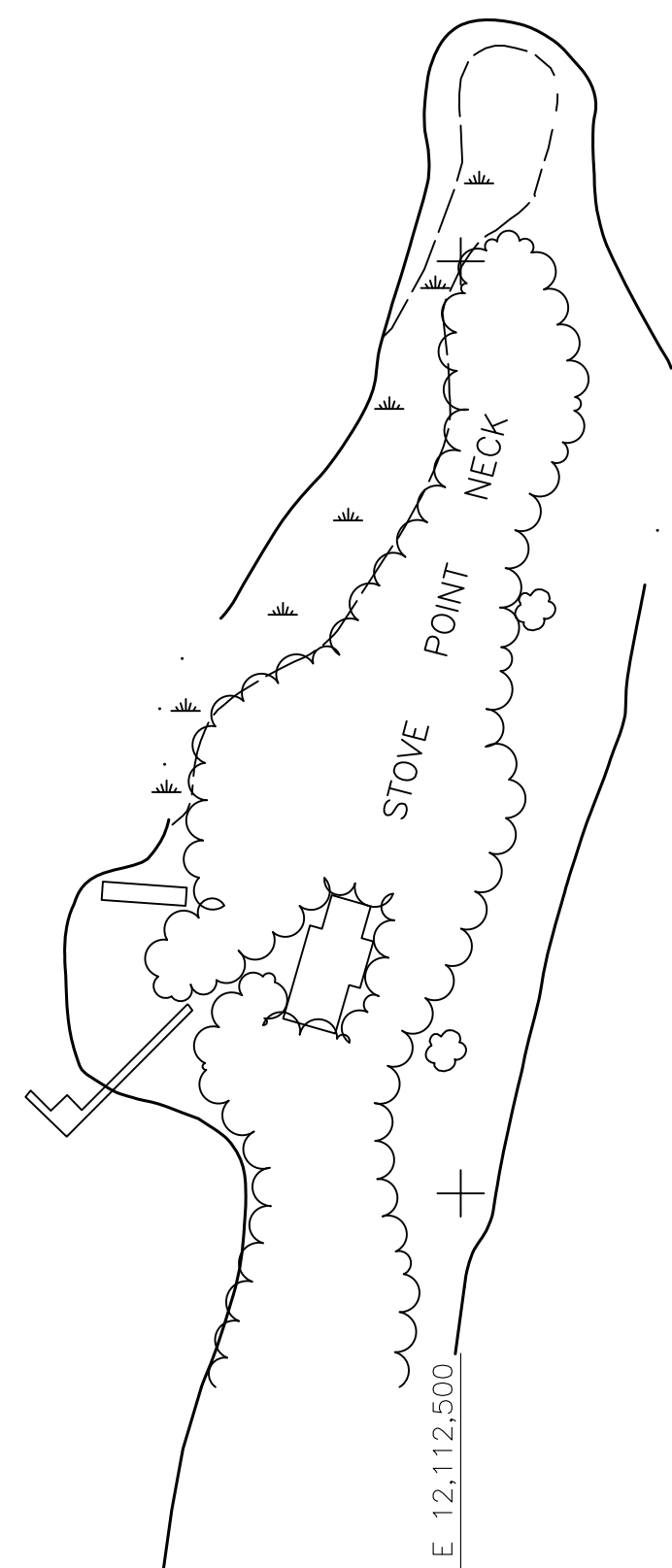


- DREDGING VOLUME ESTIMATE -

LOCATION	CUBIC YARDS, PLACE MEASUREMENT		
	TO -8 FT. (BASE BID)	-8 FT. TO -9 FT. (ALT. #1)	-9 FT. TO -10 FT. (ALT. #2)
CHANNEL MAINTENANCE DREDGING	3,000	3,000	6,500

DREDGING LIMITS (TOE) COORDINATE TABLE

STATION	NORTHING (Y)	EASTING (X)
#1	3,729,775.98	12,112,971.80
#2	3,729,848.82	12,113,241.67
#3	3,729,930.87	12,113,604.22
#4	3,729,901.61	12,113,610.85
#5	3,730,015.68	12,114,114.90
#6	3,730,018.67	12,114,251.90
#7	3,729,978.30	12,114,235.33
#8	3,729,974.68	12,114,069.65
#9	3,729,795.09	12,113,276.10
#10	3,729,824.35	12,113,269.48
#11	3,729,747.01	12,112,979.62
#12	3,730,059.04	12,114,268.47
#13	3,729,910.24	12,114,412.77
#14	3,729,782.87	12,114,478.17
#15	3,729,775.66	12,114,436.91
#16	3,729,886.67	12,114,379.91
#17	3,729,534.99	12,114,446.07
#18	3,729,237.47	12,114,407.53
#19	3,729,242.61	12,114,367.86
#20	3,729,540.13	12,114,406.40

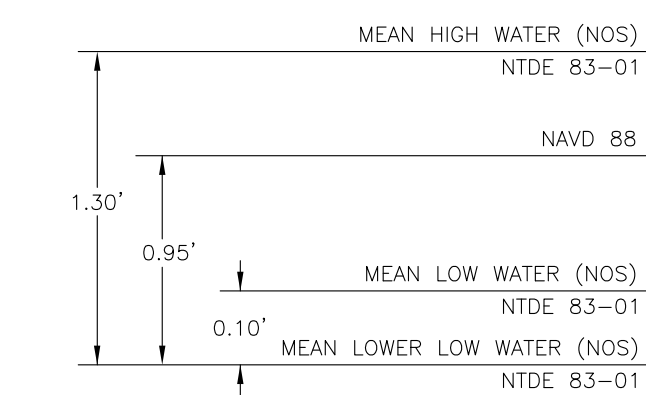


NOTES:

- SOUNDINGS WERE TAKEN FROM U.S. ARMY CORPS OF ENGINEERS DRAWING "JACKSON CREEK PROJECT CONDITION, SURVEY OF NOVEMBER 2014, MIDDLESEX COUNTY, VIRGINIA", USACE FILE JCK.2014-11-11.CS(2). DATE OF SURVEY WAS NOV. 11, 2014.
- SOUNDINGS ARE IN FEET REFERRED TO MEAN LOWER LOW WATER (MLLW), NATIONAL TIDAL DATUM EPOCH (NTDE) OF 1983-2001, AND WAS DETERMINED BY USE OF NOS SOFTWARE VDATUM 2.3.5, TO ASCERTAIN SEPARATION VALUES BETWEEN NAVD88 AND NOS (MLLW). A USACE GPS SESSION ON CE MON. "MOODY, 2010" WAS USED TO DETERMINE DIFFERENCE AT 0.95' FT. BELOW NAVD88 AT CE MON. "MOODY, 2010".
- BENCH MARK IS BRASS DISK CE "MOODY, 2010" LOCATED ON VICINITY MAP. ELEVATION = +3.11 FT. ABOVE MLLW (NOS).
- COORDINATES ARE IN U.S. SURVEY FEET REFERRED TO THE VIRGINIA STATE GRID (SOUTH ZONE) BASED ON NAD83.
- MAINTENANCE DREDGING AREA TO BE DREDGED TO -8' BASE BID, TO -9' ALTERNATE #1 TO -10' ALTERNATE #2

DIAGRAM OF DATUM PLANE

NATIONAL TIDAL DATUM EPOCH (NTDE) 1983-2001



DATE	DESCRIPTION OF REVISION	BY	APP.

Waterway
 Surveys & Engineering, Ltd.
 321 Cleveland Place, Virginia Beach, Va. 23462
 Tel: (757) 490-1691 Fax: (757) 490-1348

MIDDLESEX COUNTY VIRGINIA
 MIDDLESEX COUNTY, VIRGINIA
PLANS FOR DREDGING
 JACKSON CREEK
 SURVEY OF NOVEMBER 2014

COMMONWEALTH OF VIRGINIA

JOHN B. WALSH
 Lic. No. 11964
 07/08/16
 PROFESSIONAL ENGINEER

SURVEYED	DESIGNED
USACOE	J.B.W.
DRAWN	REVIEWED
M.S.P.	J.B.W.
SCALE	DATE
1"=100'	07/08/16
DRAWING NO.	5254-00-58-01

C-01
 SHEET 1 OF 1

FILE NAME: I:\Vino's Projects\Land 2009 Projects\5254-00-58-01.dwg LAYOUT NAME: 5254-00-58-01 PLOTTED: Friday, July 08, 2016 - 3:58pm